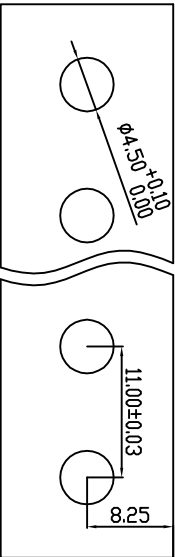
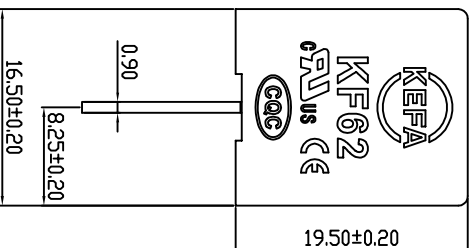
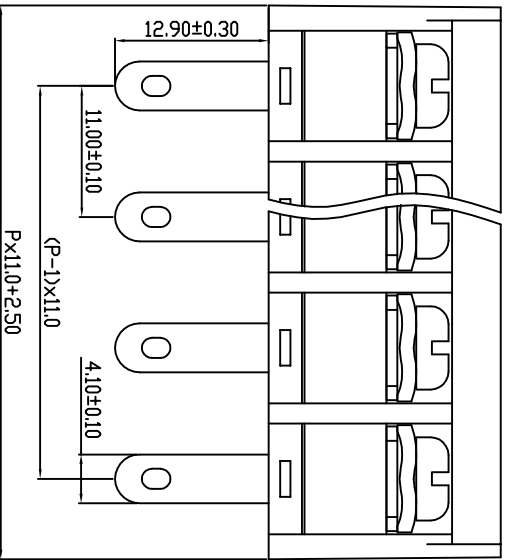
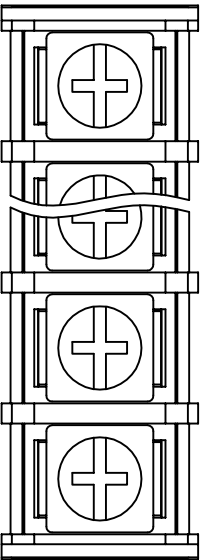


linear dimension (Tolerances Standard GB/T 14486-2008)	—										□	⊥
variable range	6 to 6	10 to 10	30 to 30	60 to 60	100 to 100	160 to 160	to 10	to 10	to 100	to 100		
tolerance	±0.20	±0.30	±0.50	±0.70	±1.00	±1.30	±1.60	0.10	0.30	0.60		



PCB LAYOUT



REVISION RECORD			
REV.	DESCRIPTION	ECN No.	APPROVED DATE

UL/CUL 技术参数			
UL/CUL Technical Data	等级	Use Group	B C D
额定电压 Rated Voltage	[V]	600	- 600
额定电流 Rated Current	[A]	30	- 30
接线范围 Wire Range	[AWG]	18-10	
单/多芯线 Solid/Stranded		18-10	
耐电压 Withstanding Voltage		2200V/Min	

IEC 技术参数			
IEC Technical Data	过电压类别 Overvoltage Category	污染等级 Contamination Class	额定电压 Rated Voltage
	III	3	400
	III	2	630
	II	2	800
额定电流 Rated Current	[A]	32	32
额定电压 Rated Voltage	[V]	400	630
额定电压 Rated Voltage	[V]	400	800
额定冲击电压 Impulse withstand voltage	[kV]	6	6 6 6
导线截面积 Conductor cross section	[mm ²]	4	
硬质/柔性导线 Solid/flexible		4	

材料 Material	
绝缘材料 Insulation Material	PA66
阻燃等级 Inflammability	UL94V-0
导体材料 Conductor Material	铜合金 Copper alloy
导体表面镀层 Contactive Coating	镀锡 Tin Plated
一般参数 Other Data	
间距 Pitch	[mm]
极数 Poles	[P]
剥线长度 Stripping Length	[mm]
螺丝 Screw/扭矩 Torque(Max)	[Nm]
工作温度 Operating temperatur	[°C]
引脚尺寸 Pin Dimensions	[mm]
PCB板孔径 PCB Hole Diameter	[mm]

DES.	DATE	单位 / UNITS	mm	尺寸 / SIZE	A4	比例 / SCALE	1:1	第三视图/THIRD ANGLE PROJECTION	版本 / REV	A
CHK.	DATE	APP.		DATE				名称 / TITLE	KEFAH-11.0	

慈溪市科发电子有限公司
CXI KEFA ELECTRONIC CO., LTD