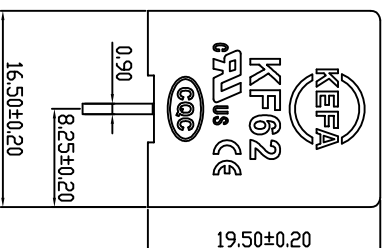
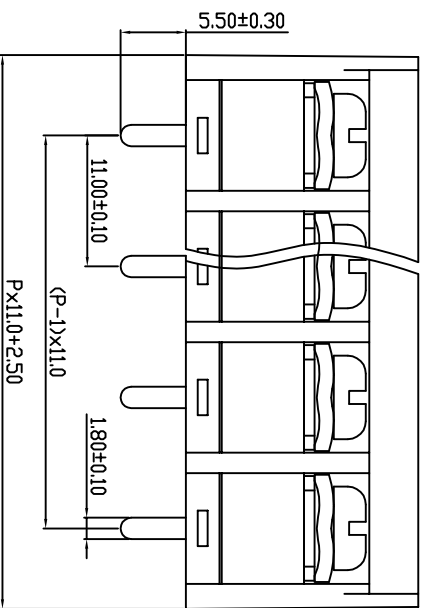
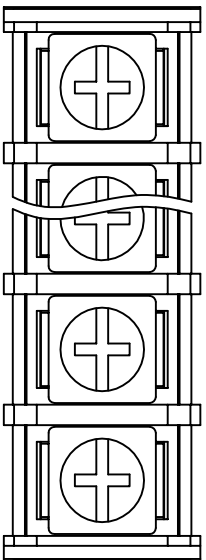
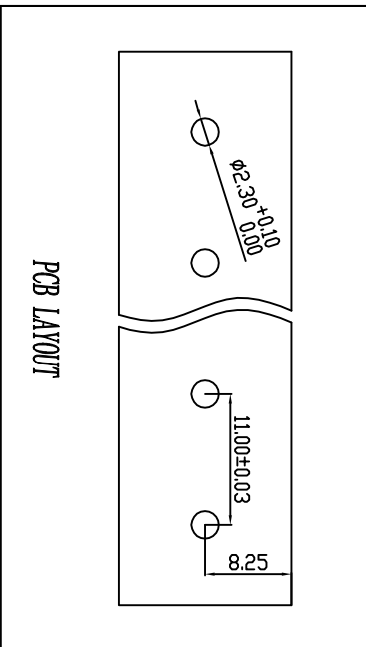


linear dimension (Tolerances Standard GB/T 14486-2008)	—									
variable range	6 to 6	over 10 to 10	over 30 to 30	over 60 to 60	over 100 to 100	over 160 to 160	over 10 to 10	over 100 to 100	over 160 to 160	over 100 to 100
tolerance	±0.20	±0.30	±0.50	±0.70	±1.00	±1.30	±1.60	0.10	0.30	0.60



REVISION RECORD			
REV.	DESCRIPTION	ECN No.	APPROVED DATE

UL/CUL 技术参数			
UL/CUL Technical Data	等级	Use Group	B C D
额定电压 Rated Voltage	[V]	600	- 600
额定电流 Rated Current	[A]	30	- 30
接线范围 Wire Range	[AWG]	18-10	
单/多芯线 Solid/Stranded	[AWG]	18-10	
耐电压 Withstanding Voltage		2200V/Min	

IEC 技术参数			
IEC Technical Data	过电压类别 Overvoltage Category	污染等级 Contamination Class	额定电压 Rated Voltage
	III	3	400
	III	2	630
	II	2	800
额定电流 Rated Current	[A]	32	32
额定电压 Rated Voltage	[V]	32	32
额定冲击电压 Impulse withstand voltage	[kV]	6	6
导线截面积 Conductor cross section	[mm <sup>2</sup> ]	4	4
硬质/柔性导线 Solid/flexible			

材料 Material		绝缘材料 Insulation Material	阻燃等级 Inflammability	导体材料 Conductor Material	导体表面镀层 Conductive Coating
		PA66	UL94V-0	铜合金 Copper alloy	镀锡 Tin Plated
一般参数 Other Data					
间距 Pitch	[mm]	11.0			
极数 Poles	[P]	02-24			
引线长度 Stripping Length	[mm]	12			
螺丝 Screw/扭矩 Torque(Max)	[Nm]	M4/1.2			
工作温度 Operating temperatur	[°C]	-40~105			
引脚尺寸 Pin Dimensions	[mm]	5.5			
PCB板孔径 PCB Hole Diameter	[mm]	2.3			

DES.	DATE	单位 / UNITS mm	尺寸 / SIZE A4	比例 / SCALE 1:1	第三视图/THIRD ANGLE PROJECTION	版本 / REV A
CHK.	DATE					
APP.	DATE					

**KEFA**  
 慈溪市科发电子有限公司  
 CIXI KEFA ELECTRONIC CO., LTD

名称 / TITLE  
**KFG62C-11.0**